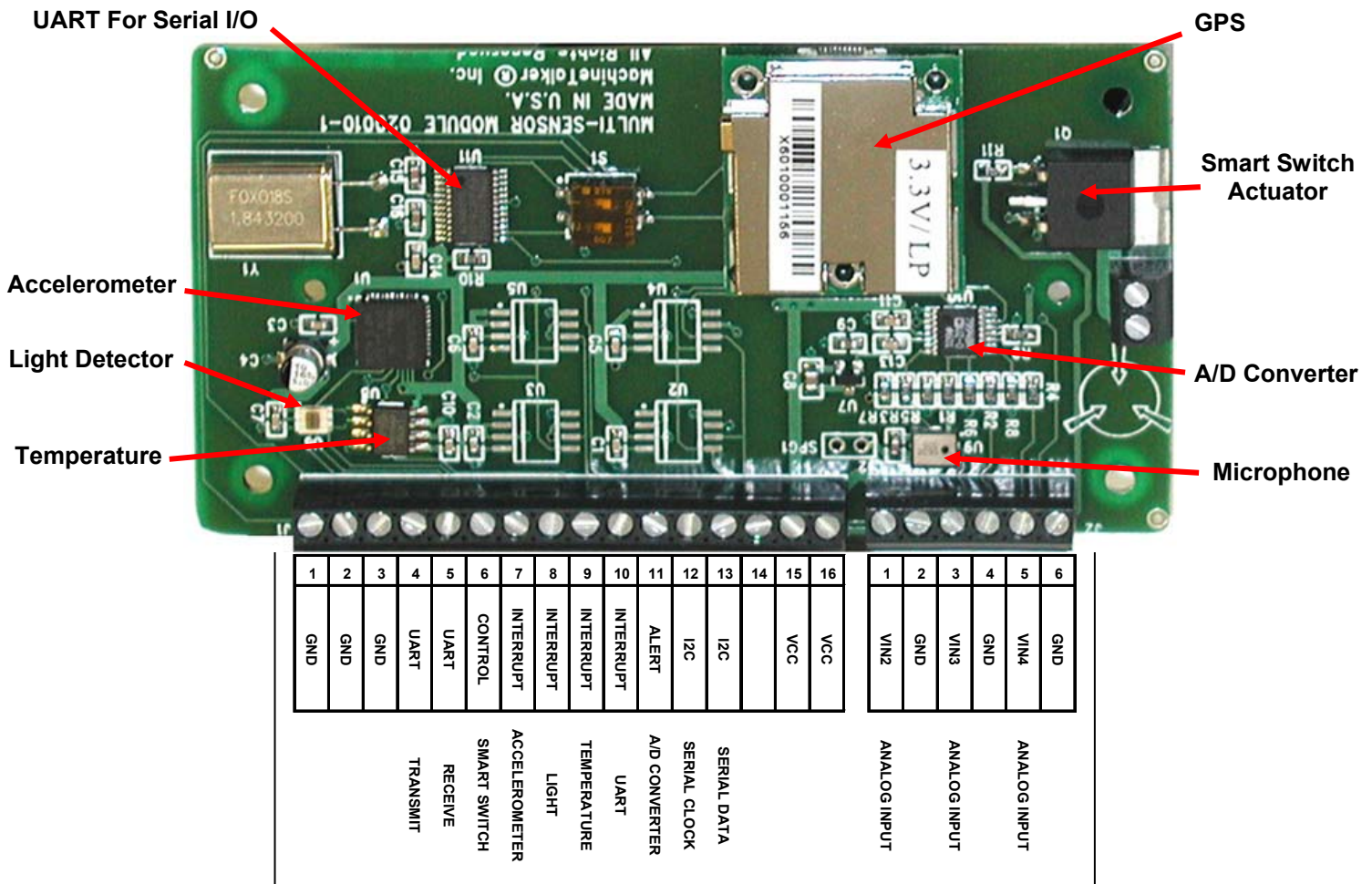


Multi-Sensor Unit for Test and Evaluation of Sensor Needs

Overview: The Multi-Sensor Unit is a collection of sensors and an actuator that interface to the MachineTalker® products for the purpose of process control at a remote wireless networking site. When attached to the I²C channel of a Talker®, the sensors in the MSU can be programmed to detect and respond to events and changes in conditions for which they are primed. Upon fulfillment of pre-set criteria the on-board sensors can interrupt the CPU of the associated MachineTalker®. **The MSU** is packaged as a separate device that is cabled to a Talker® and manufactured from the same rugged industrial class components.



Terminal Strip Pin-Outs - Requires Cable to MiniTalker® or ToughTalker™